



276 / 97 mm

TP(a)

IP65

850  
GW

IK10



# PHOENIX

## PRODUCT DESCRIPTION

- Die cast aluminium base.
- Impact modified polycarbonate diffuser.
- UV stabilized.
- Silicone gasket.
- 2 x 20mm conduit entry points.
- Available with a clear prismatic or high performance Lumaax™ Diffuser.
- Hinged Gear Tray for easy maintenance.



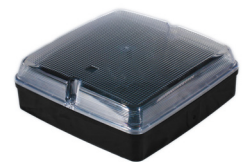
White | Lumaax™



White | Clear



Black | Lumaax™



Black | Clear

**RoHS & REACH**  
COMPLIANCE ✓

**MADE IN  
BRITAIN**



PRODUCT	PART CODE
Phoenix White   Lumaax™	PHOENIX-W-L
Phoenix Black   Lumaax™	PHOENIX -B-L